

Anti-S100A4 Antibody
Mouse Monoclonal Antibody
Catalog # AP53395**Specification**

Anti-S100A4 Antibody - Product Information

Application	WB, IP
Primary Accession	P26447
Other Accession	NM_002961
Reactivity	Human
Host	Mouse
Clonality	Monoclonal
Isotype	IgG1
Immunogen	Recombinant human S100A4 protein.
Purification	Affinity purified
Calculated MW	12 KDa

Anti-S100A4 Antibody - Additional Information**Gene ID** 6275**Other Names**

18A2; 42A; calcium Placental protein; Calvasculin; CAPL; Fibroblast specific protein 1; Fibroblast specific protein; FSP1; Leukemia multidrug resistance associated protein; Malignant transformation suppression 1; Metastasin; MTS1; OTTHUMP00000015467; OTTHUMP00000015468; P9KA; PEL98; Placental calcium-binding protein; Protein Mts1; Protein S100 A4; Protein S100-A4; S100 calcium binding protein A4 (calcium protein, calvasculin, metastasin, murine placental homolog); S100 calcium binding protein A4; S100 calcium-binding protein A4; S100a4; S10A4_HUMAN.

Dilution

WB~~1:500

IP~~N/A

Format

Liquid in PBS containing 50% glycerol, 0.5% BSA and 0.02% sodium azide, pH 7.3.

Storage

Store at 4°C short term. Aliquot and store at -20°C long term. Avoid freeze/thaw cycles.

Anti-S100A4 Antibody - Protein Information**Name** S100A4**Synonyms** CAPL, MTS1**Function**

Calcium-binding protein that plays a role in various cellular processes including motility, angiogenesis, cell differentiation, apoptosis, and autophagy (PubMed:16707441, PubMed:23752197, PubMed:30713770). Increases cell motility and invasiveness by interacting with non-muscle myosin heavy chain (NMMHC) IIA/MYH9 (PubMed:16707441). Mechanistically, promotes filament depolymerization and increases the amount of soluble myosin-IIA, resulting in the formation of stable protrusions facilitating chemotaxis (By similarity). Also modulates the pro-apoptotic function of TP53 by binding to its C-terminal transactivation domain within the nucleus and reducing its protein levels (PubMed:23752197). Within the extracellular space, stimulates cytokine production including granulocyte colony-stimulating factor and CCL24 from T-lymphocytes (By similarity). In addition, stimulates T-lymphocyte chemotaxis by acting as a chemoattractant complex with PGLYRP1 that promotes lymphocyte migration via CCR5 and CXCR3 receptors (PubMed:26654597, PubMed:30713770).

Cellular Location

Secreted. Nucleus Cytoplasm {ECO:0000250|UniProtKB:P07091}

Tissue Location

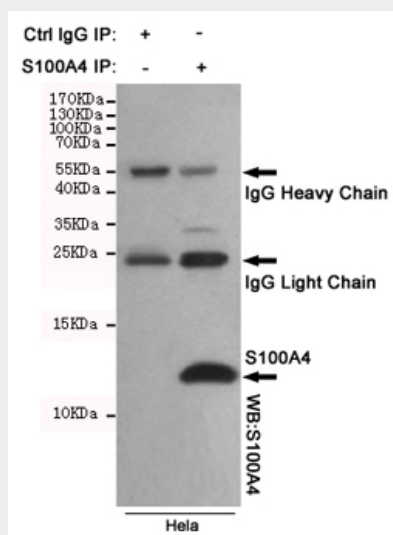
Ubiquitously expressed.

Anti-S100A4 Antibody - Protocols

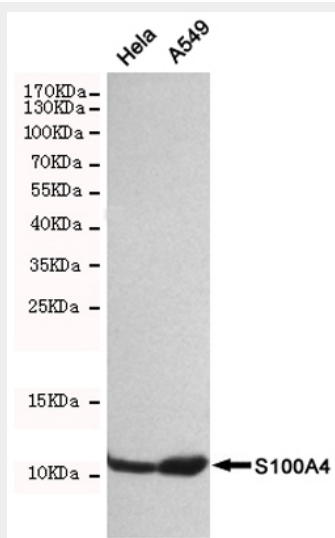
Provided below are standard protocols that you may find useful for product applications.

- [Western Blot](#)
- [Blocking Peptides](#)
- [Dot Blot](#)
- [Immunohistochemistry](#)
- [Immunofluorescence](#)
- [Immunoprecipitation](#)
- [Flow Cytometry](#)
- [Cell Culture](#)

Anti-S100A4 Antibody - Images



Immunoprecipitation analysis of Hela cell lysates using S100A4 mouse mAb.



Western blot detection of S100A4 in Hela and A549 cell lysates using S100A4 mouse mAb(dilution 1:500).Predicted band size:12kDa.Observed band size:12kDa.